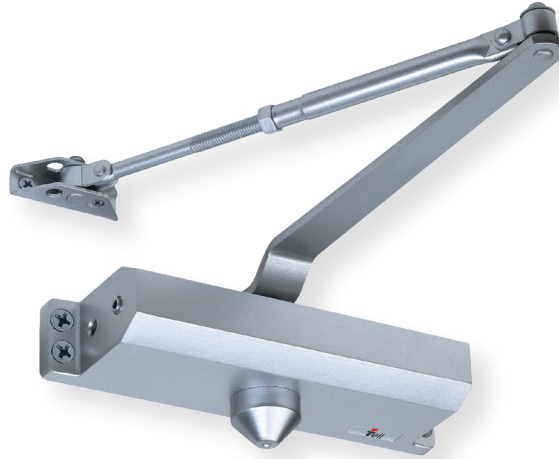


Standard-Duty Grade 3 Surface Applied

DC500 SERIES



FEATURES

- | | |
|-------------------------|---|
| Performance | <ul style="list-style-type: none"> Complies with ANSI A156.4 Grade 3 500,000 cycles UL/ULC listed up to 3 hours fire rated |
| Chassis/Closer | <ul style="list-style-type: none"> Cast aluminum |
| Handing | <ul style="list-style-type: none"> Non-handed |
| Mounting | <ul style="list-style-type: none"> Tri-Pack — regular, top jamb and parallel arm applications. |
| Main Arm | <ul style="list-style-type: none"> Stamped steel Accommodates reveals up to 3 1/4" Adjustable extension arm |
| Spring Power | <ul style="list-style-type: none"> Size 3 or Size 4, non-adjustable |
| Backcheck | <ul style="list-style-type: none"> Adjustable Hydraulic - providing cushioning and preventing uncontrolled door openings. |
| Valves | <ul style="list-style-type: none"> Adjustable, independent Non-critical (sweep and latch) Consistent closing speeds |
| Fasteners | <ul style="list-style-type: none"> Metal screws included for hollow metal and aluminum mounting applications. Wood screws included for wood door mounting applications. Thru-bolts optional. |
| Door Range | <ul style="list-style-type: none"> Up to 180 degrees |
| Door Preparation | <ul style="list-style-type: none"> 9 1/8" horizontal x 3/4" vertical 4-Hole mounting location Retrofits traditional closer |
| Warranty | <ul style="list-style-type: none"> Lifetime limited |

DC500 SERIES

OPTIONS

COVER High impact plastic
Plated kit: cover, arm & bracket

HOLD OPEN ARM Forged steel with hold open adjustable from 80 to 135 degrees

DOOR SIZING

Regular/Top Jamb Installation

CLOSER	DOOR TYPE	DOOR WIDTH				
		2' min	2.5' max	3' max	3.5' max	4' max
540	Interior	N/A	N/A	✓	✓	✓
	Exterior	N/A	N/A	✓	♿	♿
541	Interior	✓	✓	♿	♿	N/A
	Exterior	✓	✓	♿	N/A	N/A
543 - 546	Interior	N/A	N/A	543	544	545
	Exterior	N/A	543	544	545	546

Parallel Arm Installation

CLOSER	DOOR TYPE	DOOR WIDTH				
		2' min	2.5' max	3' max	3.5' max	4' max
540	Interior		✓	✓	✓	✓
	Exterior		✓	♿	♿	N/A
541	Interior		✓	♿	N/A	N/A
	Exterior		✓	N/A	N/A	N/A
543 - 546	Interior		543	544	545	546
	Exterior		544	545	546	N/A

✓ = Recommended

N/A = Not applicable or recommended

♿ = Opening force 5 lbs. on interior and 8.5 lbs. on exterior