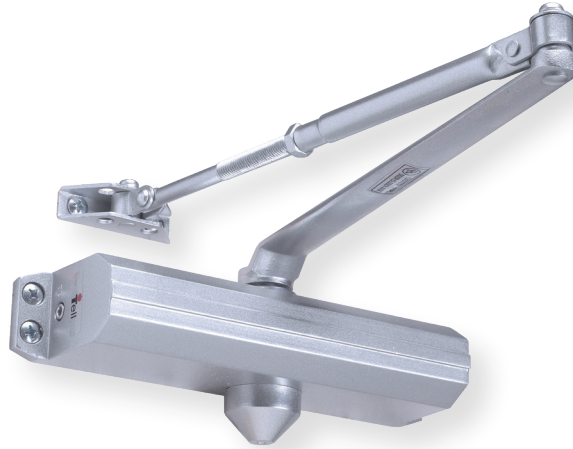


Heavy-Duty Commercial Grade 1 Surface Applied

DC600 SERIES



FEATURES

- Performance**
- Complies with ANSI A156.4
 - Grade 1
 - 2 million cycles
 - UL/ULC listed up to 3 hours fire rated

- Chassis/Closer**
- Cast aluminum

- Handing**
- Non-handed

- Mounting**
- Tri-Pack — regular, top jamb and parallel arm applications.

- Main Arm**
- Forged steel
 - Accommodates reveals up to 3 1/4"
 - Adjustable extension arm

- Spring Power**
- Adjustable 1 - 4 and 3 - 6 sizes

- Backcheck**
- Adjustable
 - Hydraulic - providing cushioning and preventing uncontrolled door openings.

- Valves**
- Adjustable, independent
 - Non-critical (sweep and latch)
 - Consistent closing speeds

- Fasteners**
- Metal screws included for hollow metal and aluminum mounting applications.
 - Wood screws included for wood door mounting applications.
 - Thru-bolts optional.

- Door Range**
- Up to 180 degrees

- Door Preparation**
- 9 1/8" horizontal x 3/4" vertical
 - 4-Hole mounting locations
 - Retrofits traditional closer

- Warranty**
- Lifetime limited

DC600 SERIES

OPTIONAL FEATURES

Covers High impact plastic and plated kit: cover, arm & bracket.

Hold Open Arm Forged steel with hold open adjustable from 80 to 135 degrees

Sex Nuts For 1 3/8" or 1 3/4" thick doors

DOOR SIZING

Regular/Top Jamb Installation

CLOSER	DOOR TYPE	DOOR WIDTH				
		2' min	2.5' max	3' max	3.5' max	4' max
640	Interior	N/A	N/A	✓	✓	✓
	Exterior	N/A	N/A	✓	♿	♿
641	Interior	✓	✓	♿	♿	N/A
	Exterior	✓	✓	♿	N/A	N/A
643 - 646	Interior	N/A	N/A	643	644	645
	Exterior	N/A	643	644	645	646

Parallel Arm Installation

CLOSER	DOOR TYPE	DOOR WIDTH				
		2' min	2.5' max	3' max	3.5' max	4' max
640	Interior		✓	✓	✓	✓
	Exterior		✓	♿	♿	N/A
641	Interior		✓	♿	N/A	N/A
	Exterior		✓	N/A	N/A	N/A
643 - 646	Interior		643	644	645	646
	Exterior		644	645	646	N/A

✓ = Recommended

N/A = Not applicable or recommended

♿ = Opening force 5 lbs. on interior and 8.5 lbs. on exterior