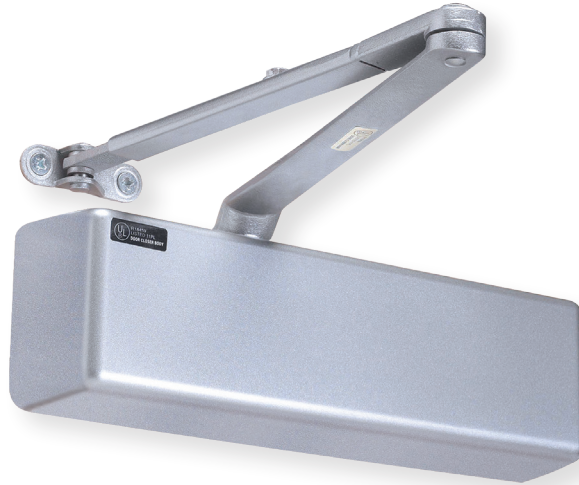


Heavy-Duty (Cast Iron) Commercial Grade 1 Surface Applied

DC900 SERIES



FEATURES

- | | |
|-------------------------|--|
| Performance | <ul style="list-style-type: none"> Complies with ANSI A156.4 Grade 1 2 million cycles UL/Ulc listed up to 3 hours fire rated |
| Chassis/Closer | <ul style="list-style-type: none"> Cast steel |
| Handing | <ul style="list-style-type: none"> Non-handed |
| Mounting | <ul style="list-style-type: none"> Tri-Pack — regular, top jamb and parallel arm applications. |
| Main Arm | <ul style="list-style-type: none"> Forged steel, accommodates reveals up to 3 1/4", adjustable extension arm |
| Spring Power | <ul style="list-style-type: none"> Adjustable 1 - 6 sizes |
| Backcheck | <ul style="list-style-type: none"> Adjustable Hydraulic - providing cushioning and preventing uncontrolled openings of the door |
| Valves | <ul style="list-style-type: none"> Adjustable, independent Non-critical (sweep and latch) Consistent closing speeds |
| Fasteners | <ul style="list-style-type: none"> Metal screws included for hollow metal and aluminum mounting applications. Wood screws included for wood door mounting applications. Closers are packed with thru-bolts. |
| Door Range | <ul style="list-style-type: none"> Up to 180 degrees |
| Door Preparation | <ul style="list-style-type: none"> 5" horizontal x 2-1/4" vertical 4-Hole mounting locations Retrofits traditional closer |
| Warranty | <ul style="list-style-type: none"> Lifetime limited |

DC900 SERIES

OPTIONAL FEATURES

Covers High impact plastic and plated kit cover, arm & bracket.

Other Features Refer to Arm Option and Accessories pages for more optional features

DOOR SIZING

CLOSER	DOOR TYPE	DOOR WIDTH						
		24" min	30" max	36" max	42" max	48" max	54" max	60" max
900	Interior	✓	✓	♿	♿	✓	✓	✓
	Exterior	✓	✓	♿	✓	✓	N/A	N/A

✓ = Recommended

N/A = Not applicable or recommended

♿ = Opening force 5 lbs. on interior and 8.5 lbs. on exterior