



# TELSTAR DOORS

Pre-hung door and frame assembly



ENGINEERED DOORS FOR THE  
**MODULAR & CONTAINER**  
BUILDINGS



From schools to construction and industrial sites, **Tell** meets the unique access needs of modular construction, especially buildings that can be relocated and re-purposed. **Telstar**, our modular building door system, makes it easy to install, maintain and refurbish. The Telstar Door is some of the most specified doors in the industry, trusted for their security and durability.

We were established in 1986 and are headquartered in Lititz, Pennsylvania. During this time, we've built a lot of trust and relationships with customers because of our dedication and expertise in providing you with the best service.

We have 6 different distribution centers to service your needs wherever you are located. We have keying service capabilities in each location to provide customization to our orders as you need it.

Our product offerings include our Telstar door system and the vast selection of door hardware to meet your everyday need.



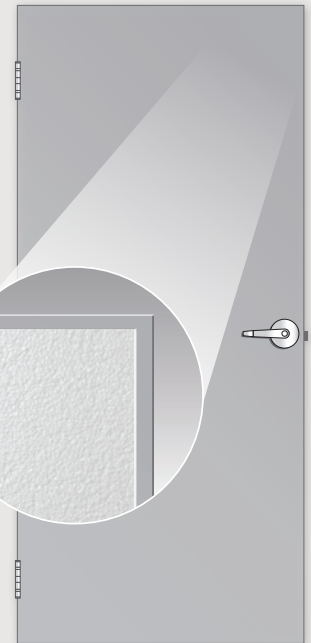
# THERE'S MORE TO TELL ...

## GALVANNEALED STEEL

*Our metal doors and frames are made from galvanized steel.*

### What's galvanized steel and why?

We've all heard of galvanized steel. It's a process to create a corrosion resistant layer of protective zinc on steel. It's extremely common, durable, and reliable. Galvanized steel is different in that it is processed at a much higher temperature than galvanized steel. At the higher temperature, the iron in the steel combines with the projective zinc layer to create a zinc-iron alloy coating. As a result, galvanized steel is harder and stronger than galvanized steel, easier to weld and the surface is a matte finish that's more consistent and easier to paint on.



## ABOUT OUR DOORS

**Tell Manufacturing's Doors** are designed to meet the architectural requirements for hollow metal doors. This premium door construction combines the strength and dimensional stability of steel with the structural integrity of the polystyrene core. The continuous bonding of core to metal provides an attractive flat door, free of face welding marks. To meet application, specification and performance requirements, the Telstar offers a wide range of specifiable options including sizes, glass lite designs, hardware preparations and edge constructions.



### LITE KIT

*We have an assortment of lite kits to choose from.*

#### Let us know how you like the door.

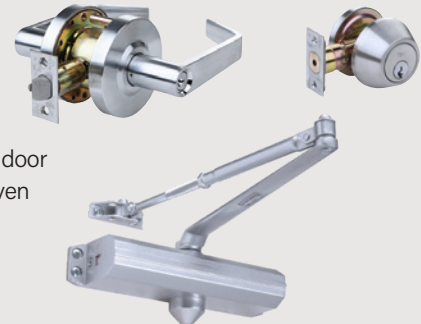
Our lite kit frames are powder coated for improved corrosion resistance compared to conventional paint finishes. Powder coating is a process where charged powder is sprayed onto the grounded frames, binding evenly to the applied surface. It's then cured to create a robust surface finish that's durable and longer-lasting than conventional paint finishes.

## TELL HARDWARE

*Our selection of hardware gives you the security options you need.*

### Rest at ease knowing the door is secure.

Tell products are a smart way to minimize the risks of property damage and theft and help ensure safety in your modular buildings. For high-traffic, high-use applications, Tell locksets, door closers, exit devices and hardware are the right commercial solutions. Our products are proven performers, offering the ideal combination of quality, durability and security.



# TELSTAR DOORS

Engineered for the Modular Building Industry

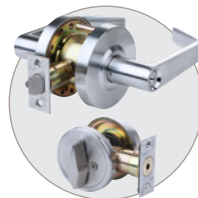
Tell's Telstar Doors are a pre-assembled 20 gauge hollow metal door and 16 gauge frame with exterior surface flange to fit your modular building needs. Our doors are manufactured from high quality galvanized steel with a polystyrene core and come factory assembled.



SPECIFICATIONS	TELSTAR PRO	TELSTAR
<b>Rough Opening</b>	▪ 38" x 81"	▪ 36" x 80"
<b>Door Size</b>	▪ 35 3/4" x 79 1/8" x 1 3/4" (3068)	▪ 34 3/4" x 78 5/8" x 1 3/4"
<b>Exterior Surface Flange</b>	▪ 40 3/8" x 83 5/8" 82 1/4" without threshold flashing	▪ 38 1/2" x 82 3/4" 81 1/4" without threshold flashing
<b>Interior Wall Overall Frame Size</b>	▪ 37 3/8" x 80 1/2"	▪ 35 5/8" x 79 3/4"
<b>Pre-Hung Double Door</b>	▪ 6' x 6'8"	▪ N/A

## FEATURES

<b>Assembly</b>	▪ Pre-hung door and frame
<b>Door</b>	▪ 20 gauge galvanized ▪ 16 gauge galvanized
<b>Frame</b>	▪ Welded top corners ▪ ASA strike prep
<b>Door Prep</b>	▪ 161 lock with deadbolt prep
<b>Hinge Prep</b>	▪ 4 1/2" heavy-duty hinges ▪ Non-removable hinge pin
<b>Closer Prep</b>	▪ 14 gauge reinforced steel, standard
<b>Threshold</b>	▪ ADA compliant threshold, sweep and seal ▪ Flashing detaches for optional installation
<b>Channels</b>	▪ 16 gauge inverted top and bottom channel
<b>Insulation</b>	▪ Polystyrene core
<b>Paint</b>	▪ Off white ▪ Bright White ▪ Medium Gray Prime
<b>Shipping</b>	▪ In crates of 8



LOCKSET & DEADBOLT READY



CLOSER REINFORCEMENT



TAMPER RESISTANT HINGE



SCREW-IN FIN DOOR FRAME



ADA THRESHOLD



POLYSTYRENE INSULATED CORE

## COLOR OPTIONS



Light Gray, GR



Bright White, BW



Off White, OW

Actual colors may vary from those shown due to limitations of the printing production process.

Lock hardware and lite kits are additional.

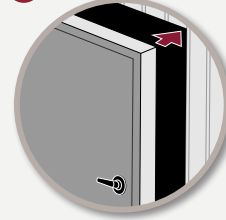
# TELSTAR CD

## Engineered Container Door

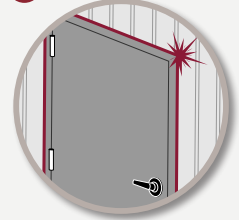
Manufactured specifically for the shipping container, the **Telstar CD** is 20 gauge hollow metal door and 16 gauge frame with outer frame cap ready to weld-in place. Our container doors are manufactured with a polystyrene core and come pre-assembled. The Telstar CD makes installation easy and fast.

## 2-STEP EZ WELD

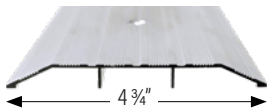
1 Place in Opening



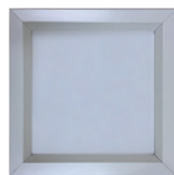
2 Weld in Place



PATENT PENDING



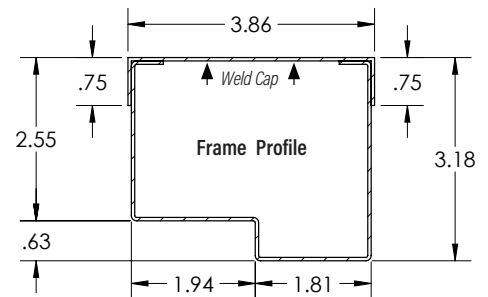
ADA Compliant Threshold



10 x 10 Lite Kit Optional



**EZ-Weld Frame**  
Unfinished 16 ga. galvanized steel surface for weld-in frame installation.



Single Rabbet Frame with Weld Cap

Lock hardware and lite kits are additional.

### SPECIFICATIONS

**Rough Opening** ▪ 41 1/8" x 82 5/16"

**Door Size** ▪ 35 3/4" x 79 1/8" x 1 3/4" (3068)

**Frame Dimension** ▪ 41 1/8" x 82 5/16" x 3 7/8" Single rabbet

**Weight** ▪ 126 lbs

### FEATURES

**Assembly** ▪ Pre-hung door and frame

**Door** ▪ 20 gauge galvanized

**Lock Prep** ▪ 161 lock prep

▪ Deadbolt prep or invisible deadbolt prep (IDB)

**Insulation** ▪ Polystyrene core

**Channels** ▪ 16 gauge inverted top and bottom channel

▪ 16 gauge galvanized steel

**Frame** ▪ Welded top corners

▪ ASA strike prep

▪ Deadbolt prep with filler plate for (IDB)

**Frame EZ-Weld** ▪ Metal surfaces prepped for easy weld-in frame installation

**Finish \*** ▪ Unfinished galvanized metal surface

**Hinge Prep** ▪ 4 1/2" heavy-duty hinges

▪ Non-removable hinge pin

**Closer Prep** ▪ 14 gauge reinforced steel, standard

**Strike** ▪ ASA strike prep

▪ Deadbolt prep

**Threshold** ▪ ADA compliant - 4 3/4" d x 1/2" h

**Door Trim** ▪ Weatherstrip and door sweep shipped loose

**Shipping** ▪ In crates of 9

### OPTIONS

**Lite Kit** ▪ Optional 10 x 10 available

# WOOD DOORS

## Flush Wood Composite

A prefinished door with an oak, walnut or birch veneer. This flush wood interior door has embossed woodgrain detail. Solid core for reducing sound transfer between room and/or meeting fire ratings. Tell Manufacturing sources a variety of quality wood doors.

### FEATURES

- Performance**
- 1-3/4" Solid core pre-finished embossed veneer finish
  - Standard size 3' x 6'8" x 1-3/4"
  - Handed
  - 20 Minute fire rated
  - Beveled lock edge
  - Standard lock prep for 2-3/4" backset cylindrical lock
  - Standard hinge prep for 3 hinges, 4-1/2" square, standard weight hinges

---

**Warranty** ▪ 5 Year

---



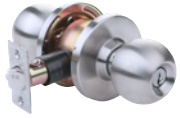
## DOOR LOCKSETS



### EXTERIOR LOCKSET PACKAGE

#### HEAVY-DUTY COMMERCIAL LEVERS

- LC2675 CTL 26D Passage Lever Grade 2 – CL100985
- LC2681 CTL 26D Entry Lever Grade 2 – CL100981



#### HEAVY-DUTY COMMERCIAL KNOB

- KC2375 EMP 32D Passage Knob Grade 2 – CL100019
- KC2381 EMP 32D Entry Knob Grade 2 – CL102346



#### DEADBOLT SINGLE CYLINDER

- DB2051 32D Single Cylinder Grade 2 – CL110180



### INTERIOR LOCKSET PACKAGE

#### LIGHT-DUTY TUBULAR LEVERS

- LT2075 CTL 32D Passage Lever – CL100196
- LT2076 CTL 32D Privacy Lever – CL100198



#### LIGHT-DUTY TUBULAR KNOBS

- KT2175 EMP 32D Passage Knob – CL100294
- KT2176 EMP 32D Privacy Knob – CL100295

## DOOR CLOSERS



### GRADE 1 CLOSER

#### HEAVY DUTY SURFACE APPLIED CLOSER

- 12641 BC PA SN1  
Adj Sizes 1-4 – DC100018



### GRADE 3 CLOSER

#### HEAVY DUTY SURFACE APPLIED CLOSER

- 12544 BC PA SN1  
Adj Sizes 1-4 – DC100152

## EXIT DEVICE



### GRADE 1 RIM EXIT DEVICE

#### HEAVY DUTY EX8300 SERIES

- Aluminum 36" – EX100002



#### EXIT TRIMS

- ESC881 CTL Escutcheon  
Lever Trim US26D – EX100054



- CTL881 Lever Trim  
US26D – EX100005

## ACCESS CONTROL LOCKS HEAVY-DUTY CODE-CHANGE LOCKS

A range of code changing electronic or mechanical locks. Provides flexibility and convenience for different access methods, via a simple code, allowing you to choose the most suitable entry method for your application.



ITEM NO.	MODEL NO.	FUNCTION
<b>CL5500 SERIES - ELECTRONIC</b>		
CL102664	CL5510 BS	Lever X Lever
CL102665	CL5500PK BS	Exit Trim



ITEM NO.	MODEL NO.	FUNCTION
<b>CL5000 SERIES - ELECTRONIC</b>		
CL102662	CL5210 BS	Lever X Lever
CL102663	CL5000PK BS	Exit Trim



ITEM NO.	MODEL NO.	FUNCTION
<b>CL600 SERIES - MECHANICAL</b>		
CL102660	CL610 BS	Lever X Lever
CL102661	CL600PK BS	Exit Trim

## HANDS-FREE DOOR AND FOOT PULL SOLUTIONS

Heavy duty, stainless steel arm pulls and foot pull, designed for hands-free operation for opening doors. Now with Microban\* added to the arm pulls.



ITEM NO.	FINISH
<b>ARM-PULL CURVE</b>	
DT101926	US32D
DT101929	US32D



ITEM NO.	FINISH
<b>ARM-PULL UPRIGHT</b>	
DT101927	US32D
DT101930	US32D



ITEM NO.	FINISH
<b>FOOT PULL</b>	
DT101925	US32D
DT101928	US32D

\* Microban applied to arm pulls only.

# DOOR TRIM



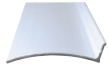
**HEAVY-DUTY DOOR CHAIN**

▪ DT100026



**36" DOOR SWEEP**

▪ DT100101



**DRIP CAPS 40"**

▪ DT100011



**WALL BUMPER (CONCAVE)**

▪ DT100084



**WALL BUMPER (CONVEX)**

▪ DT100085



**HINGE PIN STOP HEAVY DUTY**

▪ DT100138



**SPRING STOP**

▪ DT100158



**HIGH DOME FLOOR STOP 26D**

▪ DT100032



**FLOOR STOP 26D**

▪ DT100038



**KICK DOWN HOLDER**

▪ DT100008



**PUSH PLATE 28 AL**

▪ DT100073

**PULL PLATE 28 AL**

▪ DT1000484



**FILLER PLATE USP 2-1/8" BORE**

▪ DT100004



**SLIDE BOLT**

▪ DT100017



**DOOR GUARD**

▪ DT100027



**KICK PLATE 8" X 34" AL**

▪ DT100051



**KICK PLATE 10" X 34" AL**

▪ DT100280



**LATCH PROTECTOR 11"**

▪ DT100061



**LATCH PROTECTOR 7"**

▪ DT100062



**DOOR WRAP 4 1/4" X 4 1/2" X 1 3/4"**

▪ DT100093



**DOOR WRAP 4" X 9" X 1 3/4"**

▪ DT100094



**SCAR PLATE 32D 2 1/8" X 3 1/2"**

▪ DT100623



**RIM CYLINDER 26D**

▪ CL100207



**MORTISE CYLINDER 1-1/8" 26D**

▪ CL100485



Part of ASSA ABLOY

**CORPORATE OFFICE:**

18 Richard Drive  
Lititz, PA 17543  
toll free: 800-433-4047

tellmfg.com  
tell.sales@assaabloy.com

**OTHER LOCATIONS:**

Birmingham, AL  
Mira Loma, CA  
Elkhart, IN,  
Dallas, TX  
Houston, TX