

PREASSEMBLED COMMERCIAL DOORS



STANDARD FEATURES:

- Insulated with Polyurethane or Polystyrene Core
- Galvannealed (Standard)
- 7 Gauge Hinge Reinforcements
- Reinforced 161 Lock Prep
- Closer Reinforcement (Standard)
- Meets ANSI Standards
- Universal 4 1/2" Hinge Prep
- Inverted Top and Bottom Channel
- Installed Steel Cap Standard



Knockdown Door Kits are available, ask for details.



Size	Description
3070	Preassembled In White or Bronze
4070	Preassembled In White or Bronze
6070	Preassembled In White or Bronze

WIND RATED/FLORIDA APPROVED MEMBER: MBMA | MBCEA

TIOGA DOOR SYSTEM | Engineered for the Metal Building Industry

Tell Manufacturing offers a line of commercial hollow metal doors to fit your metal building needs. Our preassembled doors are available in 20 and 18 gauge steel. All doors come factory assembled complete with all components — door, frame, sub-frame and hardware, ready for easy field installation. Our doors are manufactured from high quality galvanized steel with a polyurethane or polystyrene core and are cleaned inside and out to insure corrosion resistance and paint adhesion. The doors come standard in white or bronze prime coat finish.

Tioga Doors can be wind rated or fire rated and follows the performance specifications set by the Steel Door Institute (SDI) requirements.



TIOGA PREASSEMBLED COMPONENTS

DOOR

- 1-3/4" thick, 20 or 18 gauge steel, smooth skin
- Non-handed
- Galvanized
- Insulated with Polyurethane or Polystyrene Core
- 7 gauge hinge reinforcements
- Reinforced 161 lock prep
- Closer reinforcement (standard)
- Universal 4-1/2" hinge prep
- Baked on rust inhibiting white or bronze primed finish
- 18 gauge top and bottom inverted channels
- Installed steel cap at top
- Meets ANSI standards

DOOR FRAME

- 16 gauge
- Galvanized
- 7 gauge hinge reinforcements
- Heavy duty 12 gauge reinforced strike plate prep
- Universal 4-1/2" hinge prep
- Baked on rust inhibiting white or bronze primed finish
- Meets ANSI standards
- Corners are bolted
- Steel sub-frame and attachments

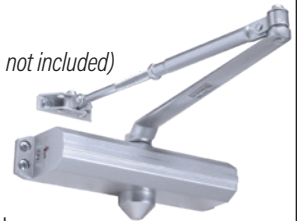
LOCKSET *(optional, not included)*

- Heavy duty cylindrical grade 2
- Free wheeling clutch
- Standard solid brass 6-pin cylinder with a Schlage C keyway
- 2-3/4" backset
- Chassis is steel and coated with corrosion resistant zinc dichromate



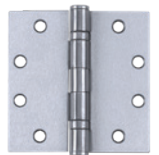
DOOR CLOSER *(optional, not included)*

- Heavy duty grade 1
- Adjustable back check, and sweep and latch speeds
- Door range up to 180 degrees



HINGES

- 4-1/2" x 4-1/2" square corner
- Ball Bearing
- Non-removable pin
- Silver Powder Coated



WEATHERSTRIPPING

- Kerfed and friction fitted



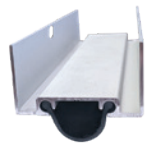
THRESHOLD

- 5" aluminum
- 1/2" saddle shaped that meets ADA



SWEEP

- Surface mounted
- Adjustable



OTHER HARDWARE AVAILABLE

HEAVY DUTY MORTISE LEVER, DEADBOLT, EXIT DEVICE, AND LITE KITS



Tell Manufacturing
18 Richard Drive
Lititz, PA 17543